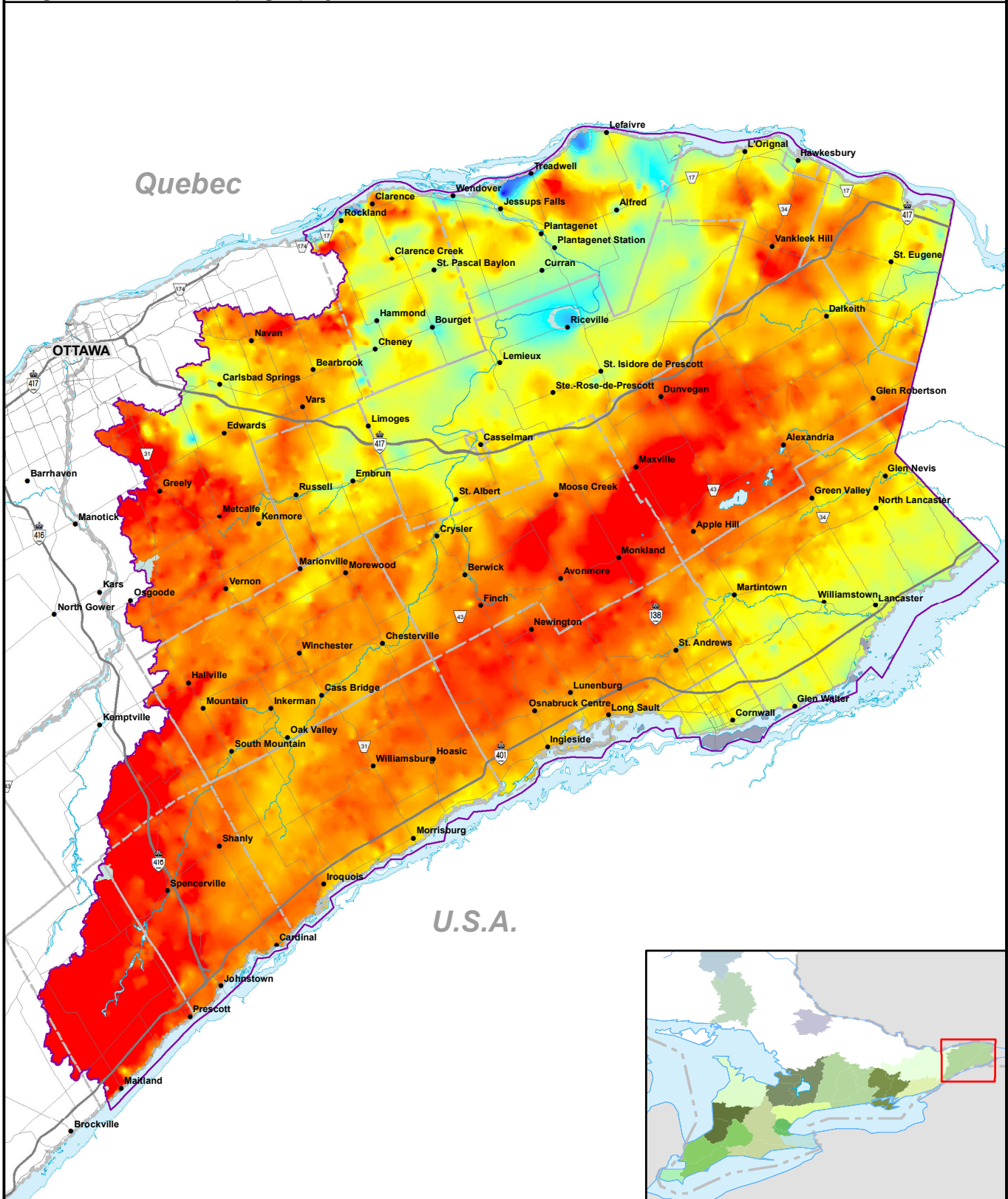





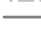





Map 2.3 Regional Bedrock Topography





 1:650,000
 (Printed ANSI A)

 Raisin Region SPA  South Nation SPA  Rivers and Lakes	Legend  Municipal Boundary  Primary Roads  Secondary Roads  Villages/Towns	Bedrock Topography Value  High : 129 m.a.s.l. Low : -48 m.a.s.l.
---	---	---

This map is intended to accompany the Assessment Report and may be subject to change. Please consult the local Conservation Authority for the latest version and assistance with proper interpretation.

Base data is provided by the Ontario Ministry of Natural Resources. Produced by the South Nation River Conservation Authority under license.




 DE L'EAU POTABLE À LA SOURCE
 Raisin Region Conservation Authority
 Office de protection de la nature de la région Raisin
 SOUTH NATION CONSERVATION
 DE LA NATION SUD
 Ontario