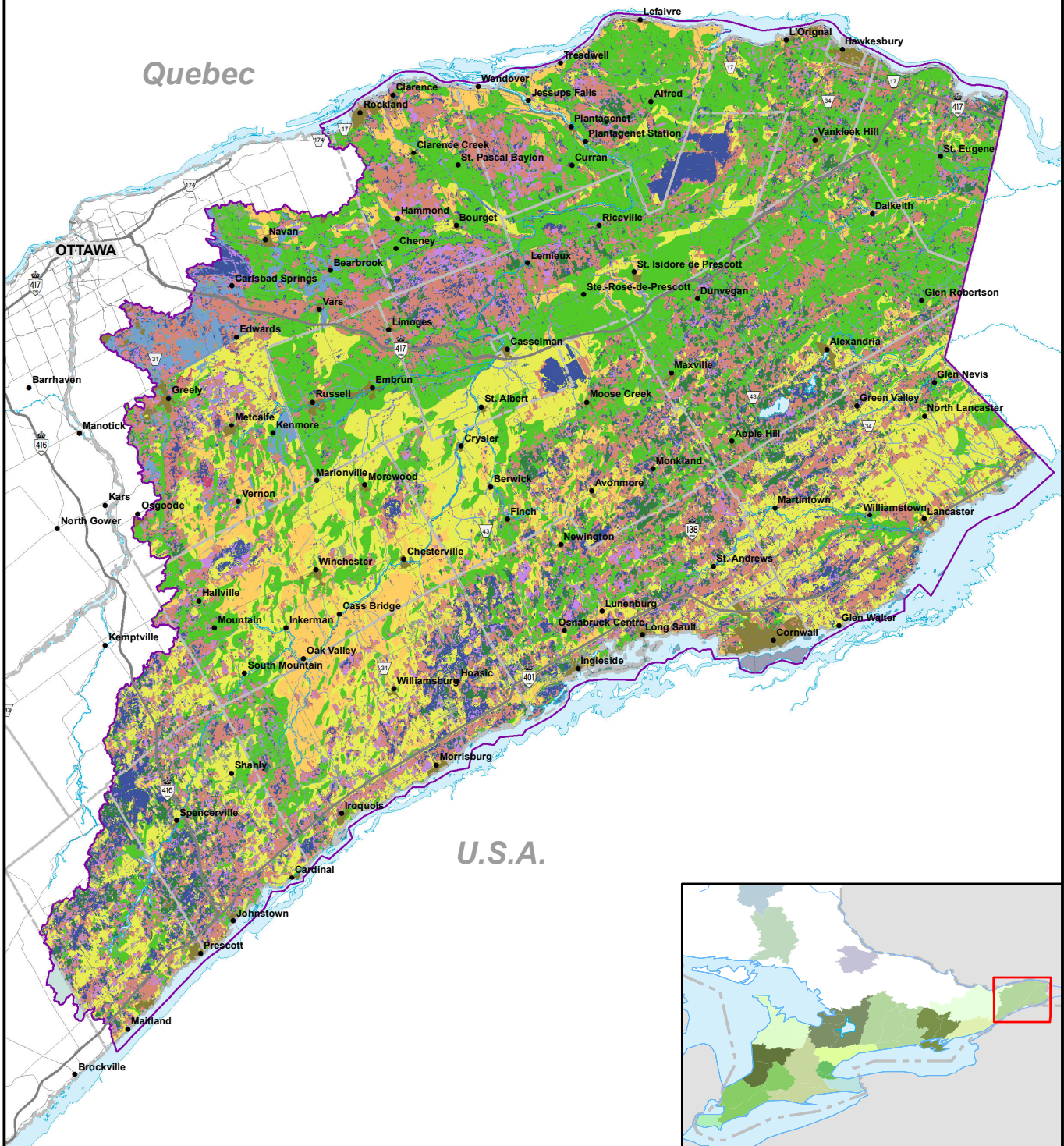


Map 3.2 Regional Evapotranspiration Rates (Estimates)



Scale: 1:650,000
(Printed ANSI A)

North Arrow: N, S, E, W

This map is intended to accompany the Assessment Report and may be subject to change. Please consult the local Conservation Authority for the latest version and assistance with proper interpretation.

Base data is provided by the Ontario Ministry of Natural Resources. Produced by the South Nation River Conservation Authority under license.

Copyright © Queen's Printer for Ontario, 2012.

- Legend**
- Raisin Region SPA
 - South Nation SPA
 - Rivers and Lakes
 - Municipal Boundary
 - Primary Roads
 - Secondary Roads
 - Villages/Towns
- Evapotranspiration Rates**
Evapotranspiration (mm/yr)
- 150 Urban
 - 270 Soil - Coarse Texture
 - 330 Soil - Unclassed Texture
 - 334 Soil - Unclassed Texture - Gloucester
 - 335 Open Areas
 - 340 Soil - Fine Texture
 - 390 Soil - Medium Texture
 - 445 Forest - Conifer
 - 541 Forest Mixed
 - 577 Unclassed
 - 638 Forest Deciduous
 - 640 Open Water



DRINKING WATER SOURCE PROTECTION
DE L'EAU POTABLE À LA SOURCE

Raisin Region Conservation Authority
Office de protection de la nature de la région Raisin

SOUTH NATION CONSERVATION
DE LA NATION SUD

Ontario