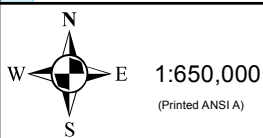
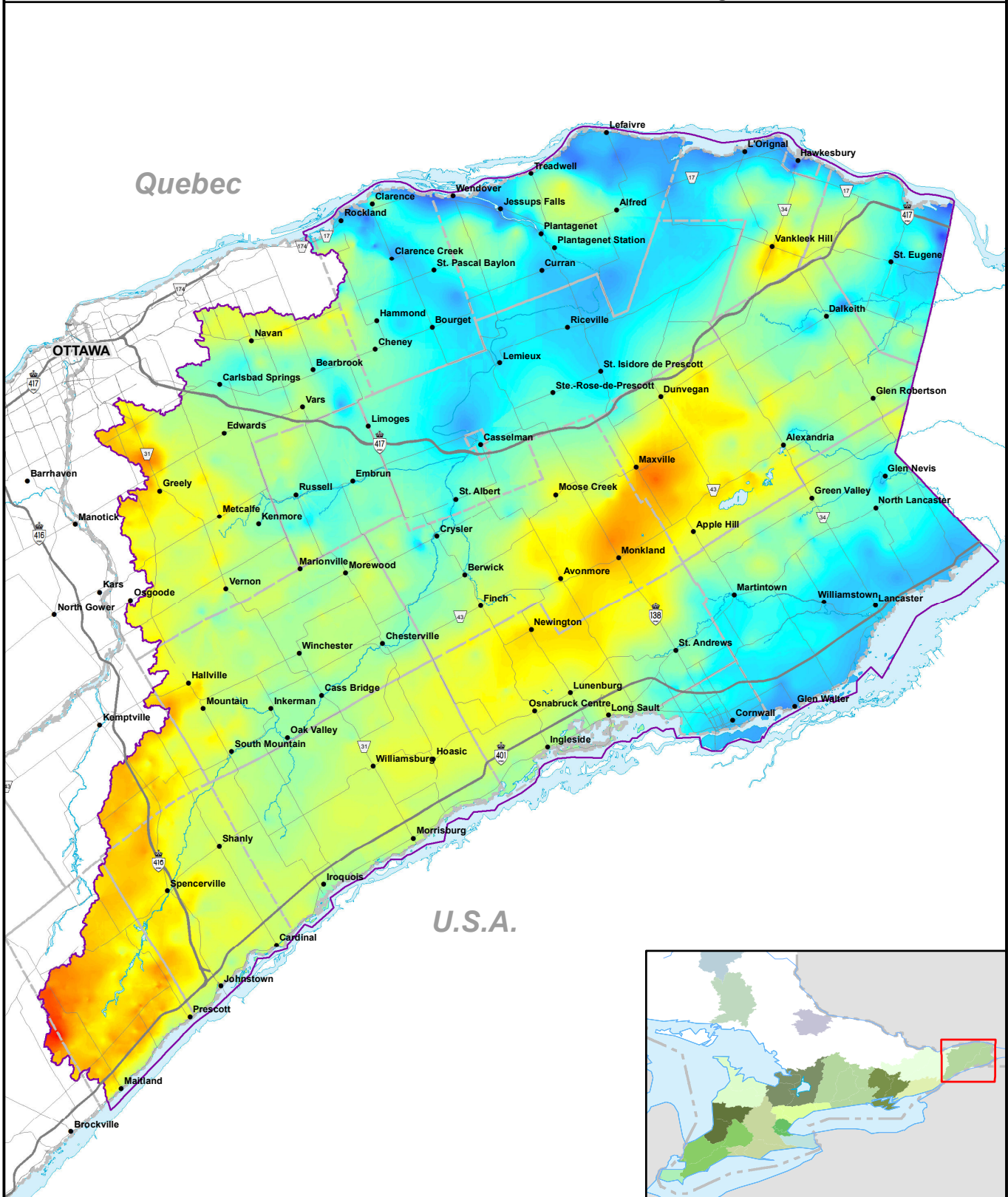


Potentiometric Surface of the Intermediate Bedrock, within the Region



This map is intended to accompany the Assessment Report and may be subject to change. Please consult the local Conservation Authority for the latest version and assistance with proper interpretation.

Base data is provided by the Ontario Ministry of Natural Resources. Produced by the South Nation River Conservation Authority under license.

Copyright © Queen's Printer for Ontario, 2012.

**Legend**

- Raisin Region SPA
- South Nation SPA
- Rivers and Lakes
- Municipal Boundary
- Primary Roads
- Secondary Roads
- Villages/Towns

**Intermediate Bedrock (m)**

