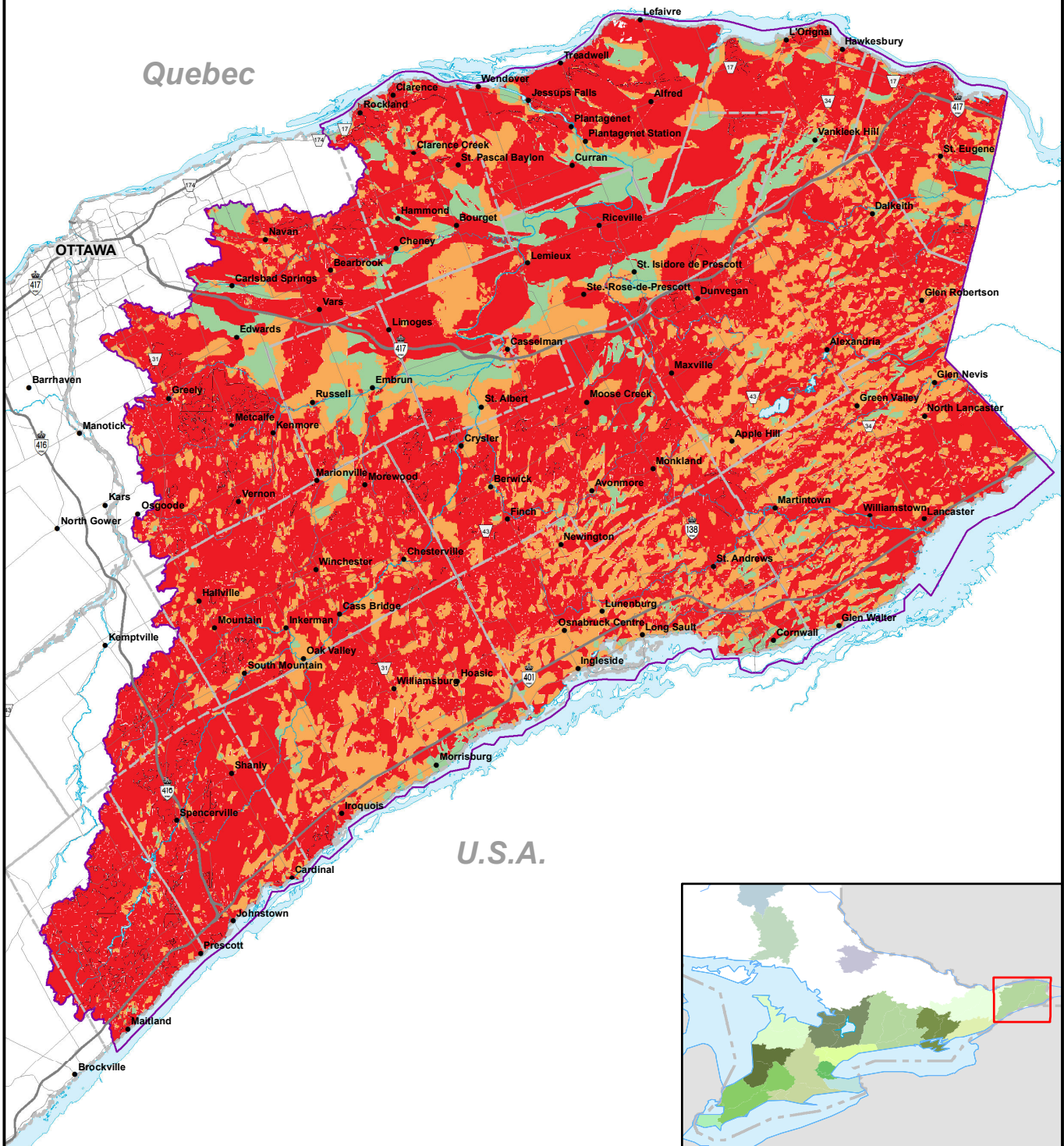


# Map 4.1 Aquifer Vulnerability, within the Region



N  
W E  
S  
1:650,000  
(Printed ANSI A)

This map is intended to accompany the Assessment Report and may be subject to change. Please consult the local Conservation Authority for the latest version and assistance with proper interpretation.

Base data is provided by the Ontario Ministry of Natural Resources. Produced by the South Nation River Conservation Authority under license.

Copyright © Queen's Printer for Ontario, 2012.

### Legend

- High
- Medium
- Low
- Rivers and Lakes
- Municipal Boundary
- Primary Roads
- Secondary Roads
- Villages/Towns



**DRINKING WATER SOURCE PROTECTION**  
DE L'EAU POTABLE À LA SOURCE

Raisin Region Conservation Authority  
Office de protection de la nature de la région Raisin

SOUTH NATION CONSERVATION  
DE LA NATION SUD

